

# ***BUFFALO***

## **LinkStation 200 Series**



## **Network Attached Storage Setup Guide**

Last updated: 2025-08-18



# ✓ Hello and Welcome to the Start of Your Journey!

This Setup Guide has been written to help new users configure a Buffalo Network Attached Storage (NAS) device after recent security changes in both Microsoft Windows and Apple MacOS.

Built upon internal data from the last 10 years of customer interactions, then filtered down to account for the recent changes to security, these instructions will attempt to address the most encountered needed steps for new users with directions from shortly after unboxing in mind.

If you encounter problems while following this guide as a new user, please visit our website [BuffaloAmericas.com](https://buffaloamericas.com) and reach out to support for assistance. For existing users who have lost access after a Windows or MacOS update, you may be better served by using [this Knowledge base article](#) or visiting the Downloads page for your specific model for further instructions.

Product packaging, documentation, Ethernet cable design/color or power supply connector type may differ by region or vendor. For the best experience, please only purchase from an authorized Buffalo Americas reseller!

## Important:

The Power Adapter provided has been specifically chosen to meet the needs of both the drive capacity and drive count of each specific model. The output listed on the power adapter will be 12v with a range between 1.5a-4a. Using the wrong power adapter can cause damage, abnormal behavior, or data loss!





# LS200 Series Setup Guide

## Main Menu

Hardware Setup

Installing NAS  
Navigator for Windows

Installing NAS  
Navigator for MacOS

Setup Wizard

Windows  
Drive Mapping

Microsoft Windows  
NovaBackup

Apple MacOS  
File Share Mounting

Apple MacOS  
TimeMachine Backup



LS220



LS210



Clicking on the Home button  
will return you to this menu





## Plugging in your Buffalo Network Attached Storage for the first time

For proper operation, your NAS will need to be plugged into your Local Area Network (LAN). You may be more familiar with the terms: router, switch, or modem\*.

The NAS will need to be placed close enough to connect the supplied Ethernet cable to a LAN port of your network that will commonly be on one of these devices.

\*Only use if it is a combination modem + router. If unsure: modems usually only have 1 or 2 ports!

### Step 1:

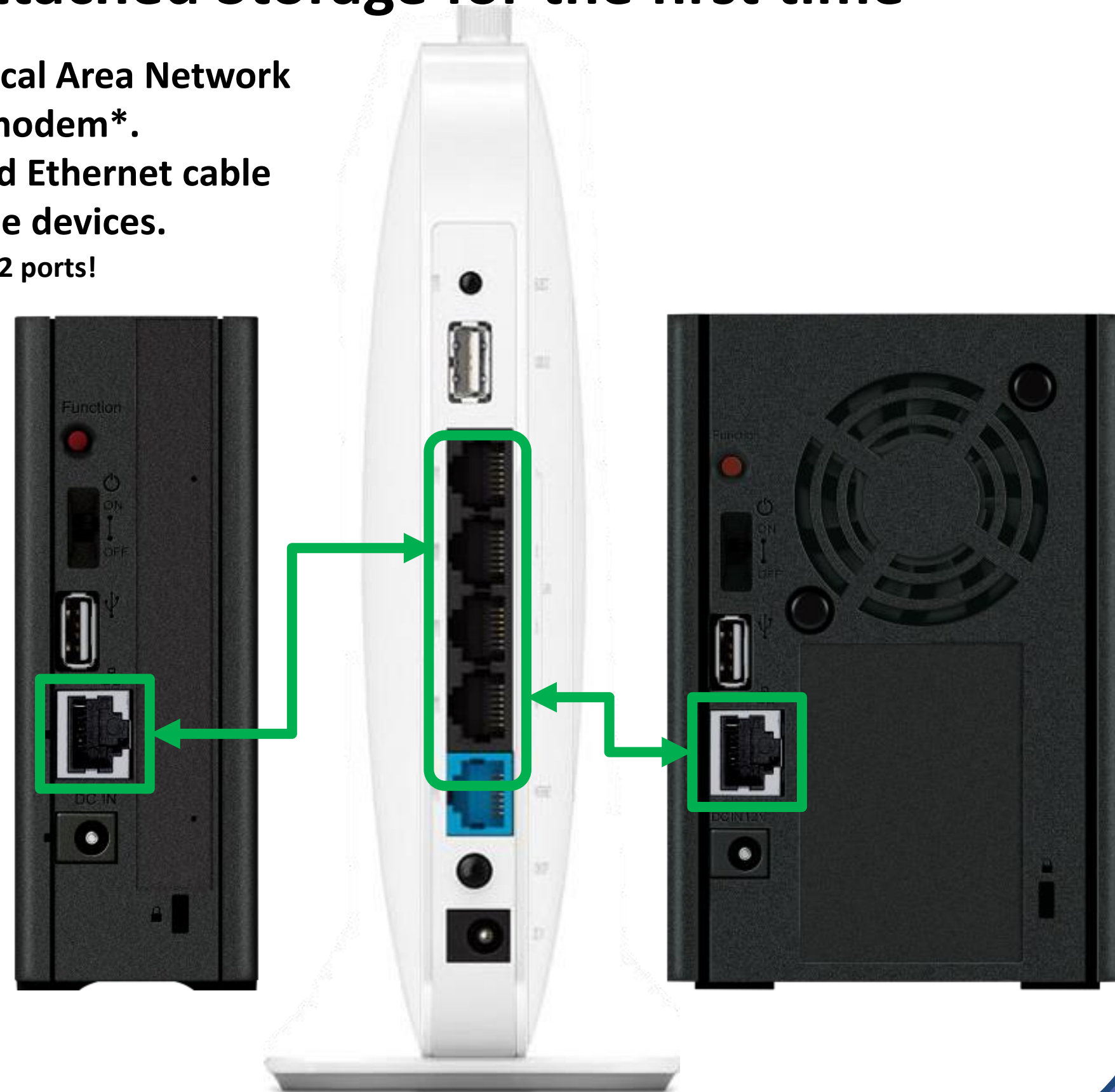
Chose an appropriate location, it will need to be near your networking equipment and have proper ventilation allowing airflow in both the front and back of the NAS.

### Step 2:

Connect it to your network. For best results, please use the Ethernet cable included with the NAS.

### Important:

Take care in this step to visually confirm you are plugging the network cable into the correct port when connecting to a router, it must not be plugged into a port marked for WAN/Internet use. LAN ports are usually a different color, grouped together, and/or may be numbered. If unsure, consult your router's user manual.





## Step 3:

Before plugging the power in, make sure you're still using the supplied adapter, as it's not uncommon to plug in the wrong adapter after the previous steps. The router model in our example images was selected to highlight the common use of the DC barrel jack plug.

## Step 4:

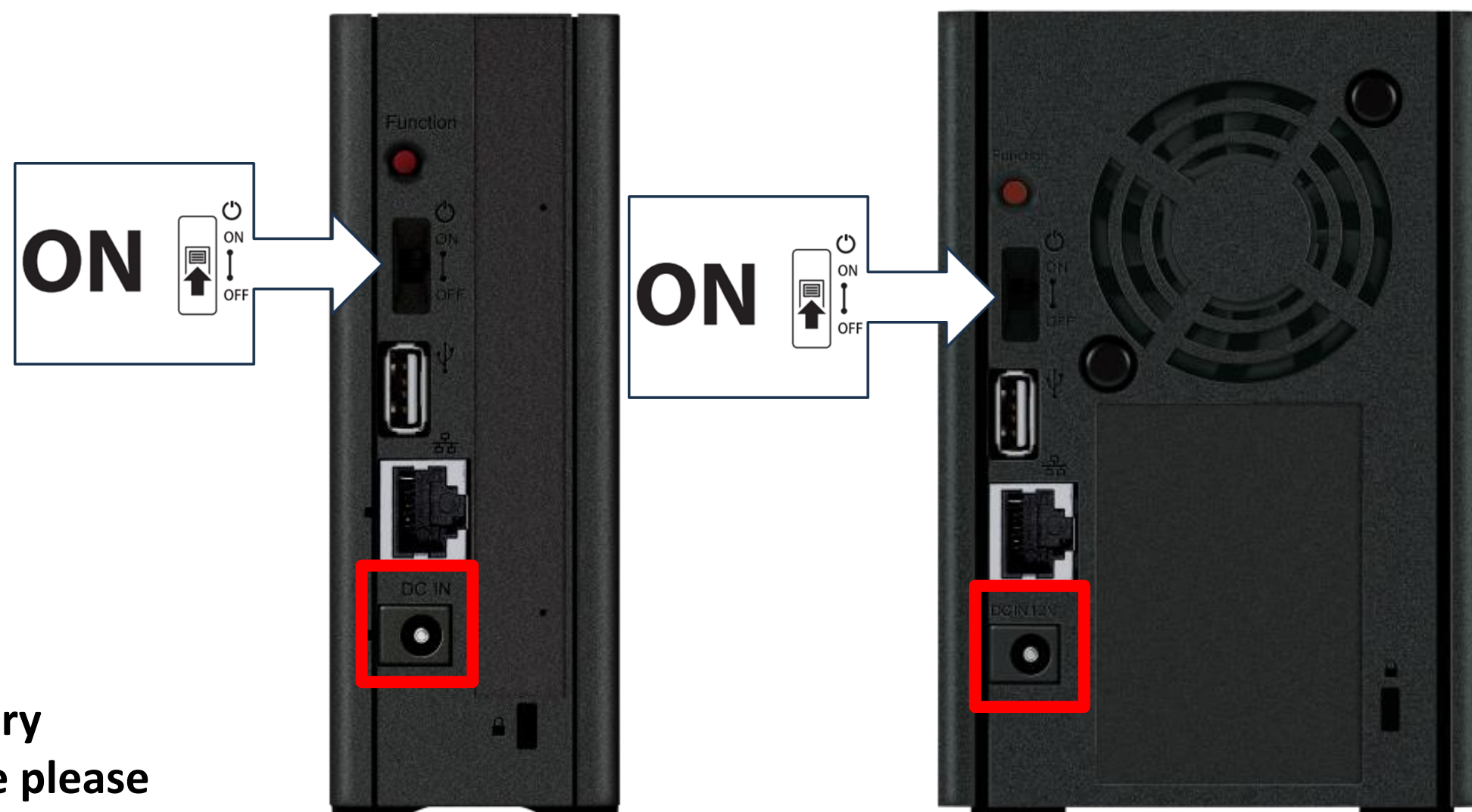
On the back of the NAS is the **power switch**, and it functions in much the same way as the button on your computer.

When switched **ON**, the NAS begins startup operations  
When switched **OFF** the NAS begins shutdown operations  
>Go ahead and flip the switch to the **ON** position.

**WARNING:** During shutdown do NOT unplug the power adapter until the Power LED turns completely off!

### Important:

While you *should* always plug any storage device into a Battery Backup / Uninterruptable Power Supply (UPS), if not possible please at least make sure to use a surge protector instead of a power strip or wall outlet. Damage caused by power events without proper protection are not covered by our product warranty.







With the power switch now flipped into the **ON** position, your Buffalo Network Attached Storage device will be conducting its first boot startup checks as indicated by the power LED flashing white!

You may now proceed to the next step!

Reference:

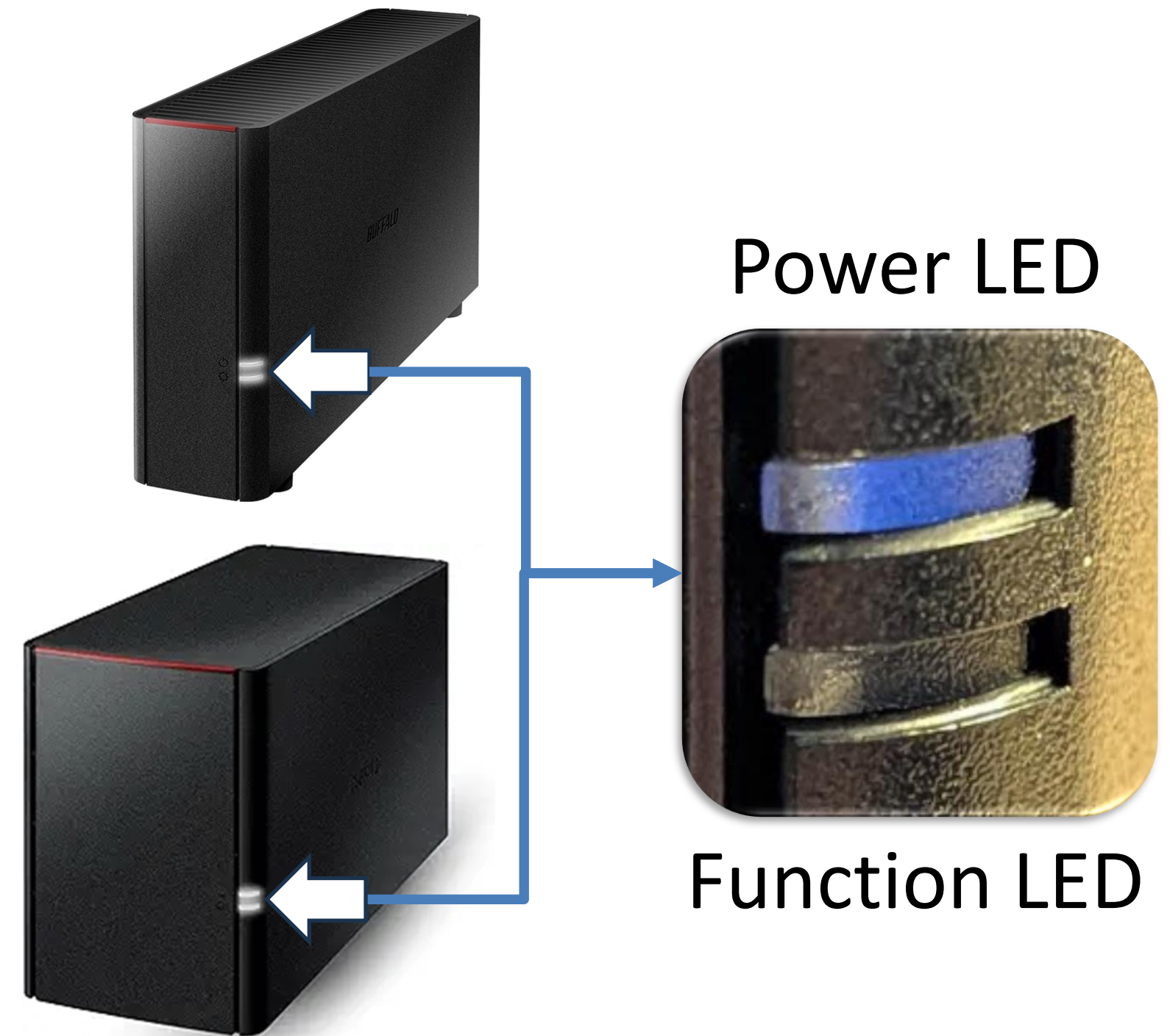
Boot, Error, and Information status can be checked by observing the two LED lights on the front of your NAS.

## Power LED

- Blinking White: LinkStation is starting up or shutting down
- Solid White: LinkStation has fully started up
- Solid Amber: A new firmware is available
- Blinking Red: An error has occurred
- Blinking Amber: A status message is available

## Function LED

- Blinking White: Direct Copy feature operation in progress
- Solid White: Settings initialization / USB device unmounted





# Installing NAS Navigator for Windows – Part 1

**BUFFALO**

With the LinkStation now booting up for the first time, a way to find it on your network is needed. The Buffalo NAS Navigator2 software provided for download is a Client Utility that will allow us to easily and quickly detect the LinkStation once it has completed boot operations and allow us to proceed with setup and configuration for use.

## Step 1:

Obtain the NAS Navigator2 software by clicking or visiting [BuffaloAmericas.com/support/download](https://buffaloamericas.com/support/download) manually.

It is not necessary to put in your model number from the label on your NAS for all downloads – you only need to click on the Windows option to download.

## Step 2:

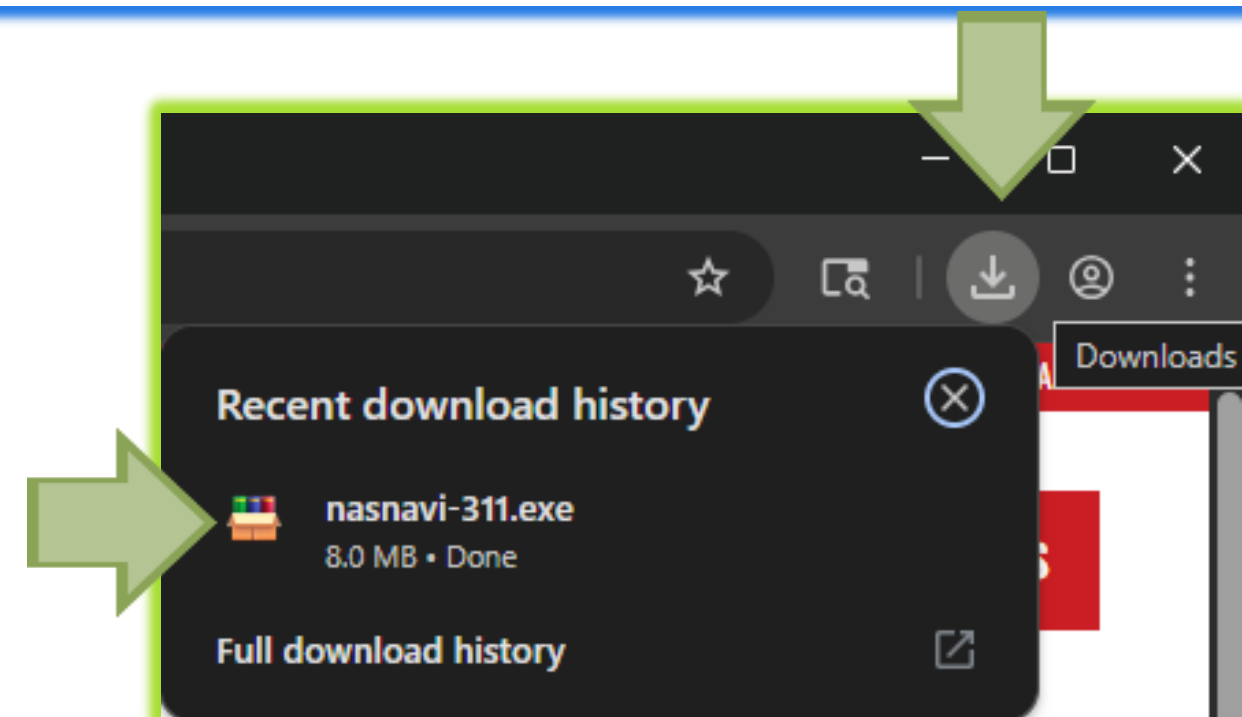
It is now time to install. In most web browsers, you should have a downloads button. Click on it to show recent downloads as shown in the example, then click on the downloaded file.

### Downloads

Find and download the latest product firmware, utility or driver.

Download the latest version of NAS Navigator for [Windows](#) or [Mac OS](#) (For Mac OS 10.13 or later obtain NAS Navigator from the app store)

Product







# Installing NAS Navigator for Windows – Part 2

**BUFFALO**

## Step 3:

Click **Yes** to approve the installation when prompted by the User Account Control security window that should pop up.

## Step 4:

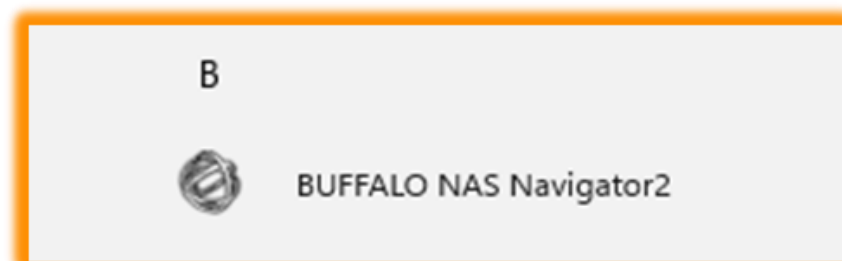
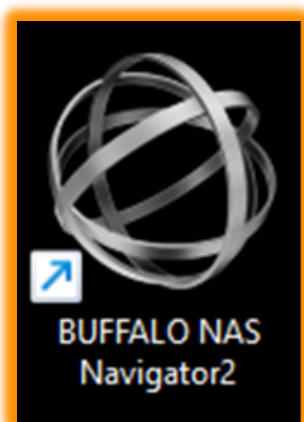
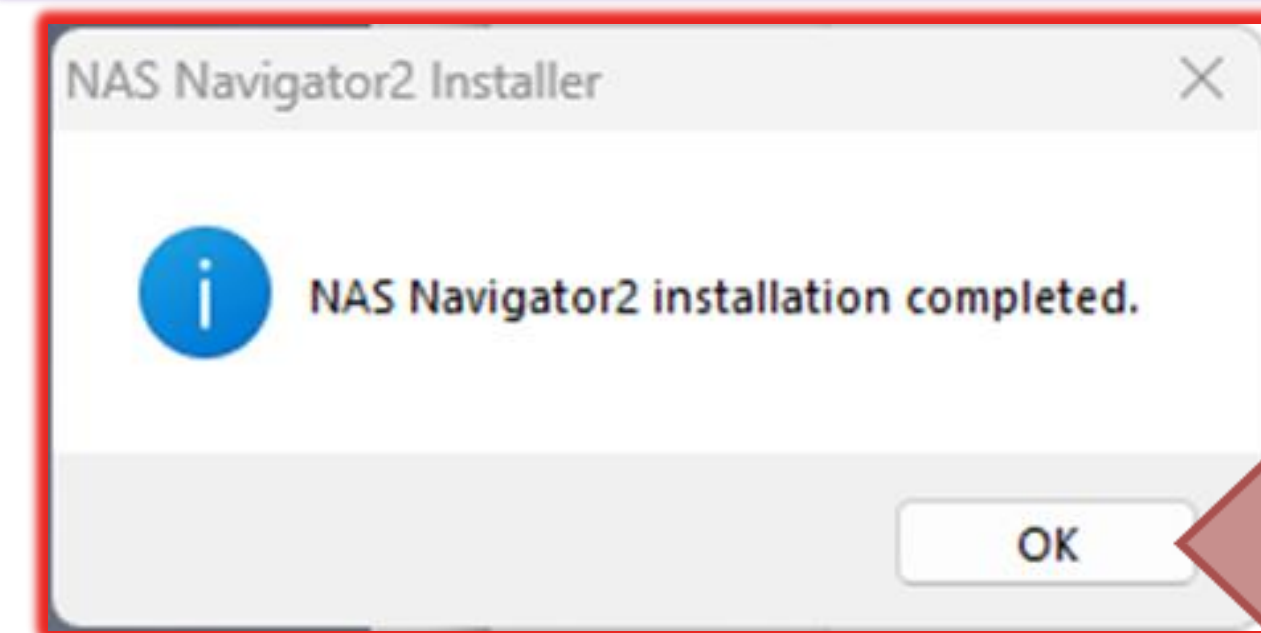
During the installation process, the installer will open and close for each step of the process, this is normal.

Click **OK** when the Installation Completed windows appears.

## Step 5:

There should now be a new Icon on your desktop, as well as in the Start Menu labeled **BUFFALO NAS Navigator2**.

You may proceed at this point to launch the application.







# Installing NAS Navigator for macOS

**BUFFALO**

With the LinkStation now booting up for the first time, a way to find it on your network is needed. The Buffalo NAS Navigator2 software is a Client Utility that will allow us to easily and quickly detect the LinkStation once it has completed boot operations and allow us to proceed with setup and configuration for use.

## Step 1:

Obtain the NAS Navigator2 Software by first opening the Apple App Store by clicking on the App Store icon.

## Step 2:

In the top left you should have a search field; click in this field and type in “NAS Navigator2”, then hit enter.

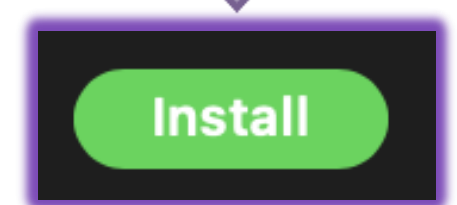
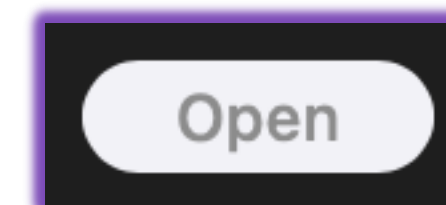
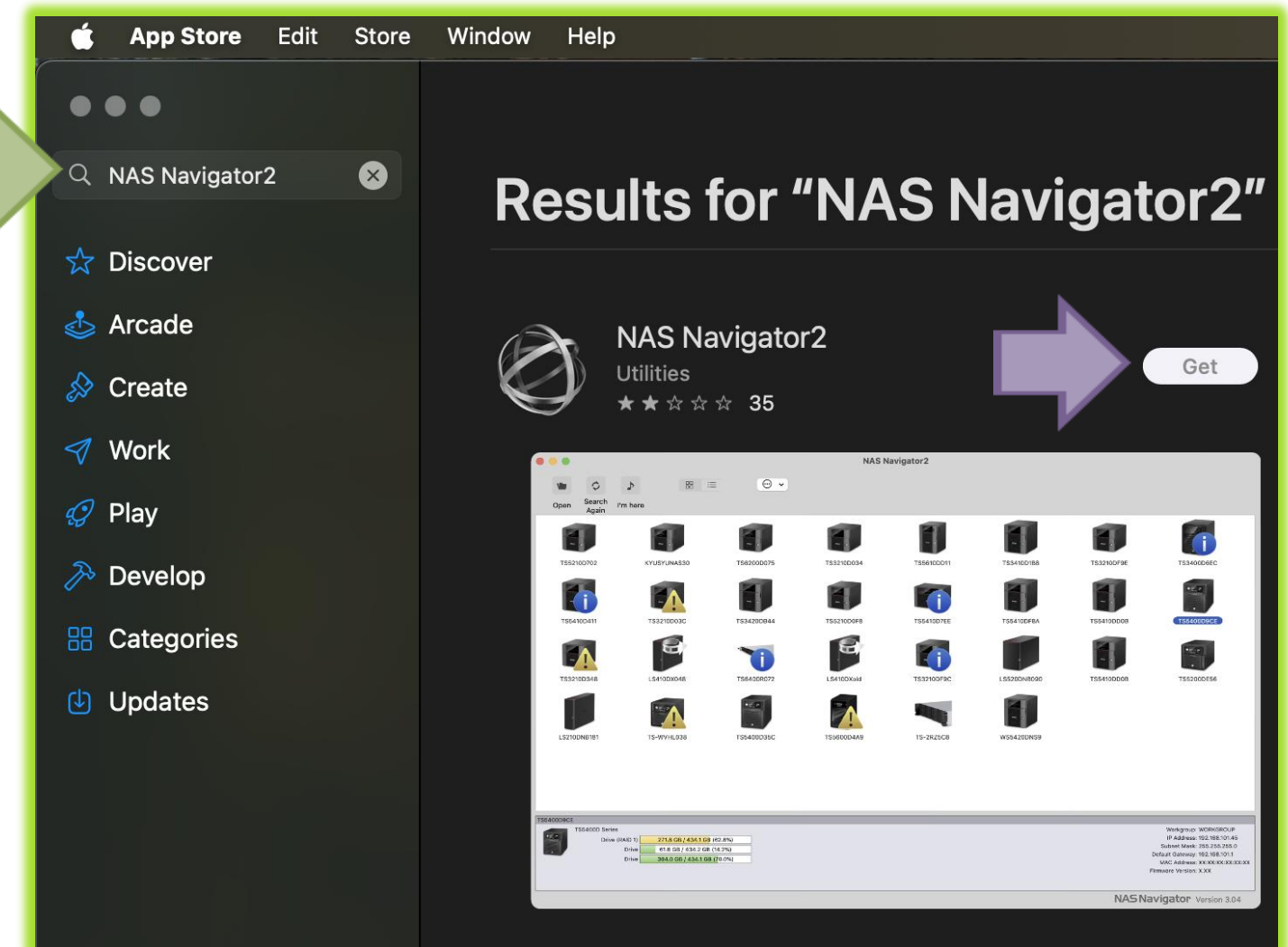
## Step 3:

1. Click on “Get”.
2. Click on “Install”.
3. Click on “Open”.

### Note:

You may be prompted for your Apple account to proceed. Depending on your settings, you may now have the NAS Navigator2 icon on the desktop, dock, launchpad, and/or in the Finder Applications section. For macOS 10.14 or older use the download link here:

[BuffaloAmericas.com/support/download](https://BuffaloAmericas.com/support/download)







# Using NAS Navigator2

**BUFFALO**

The Buffalo NAS Navigator2 client utility is designed to help users by displaying basic information and providing shortcuts to enable fast setup and access.

**Important:** Until the Power LED turns solid, you will not see your unit displayed. When initially discovered, it may show the drive or array as 'Unformatted' or 'Not connected' if it is not fully booted. If this occurs, wait 3-5 minutes, then search again and reconnect.

## What am I seeing here?

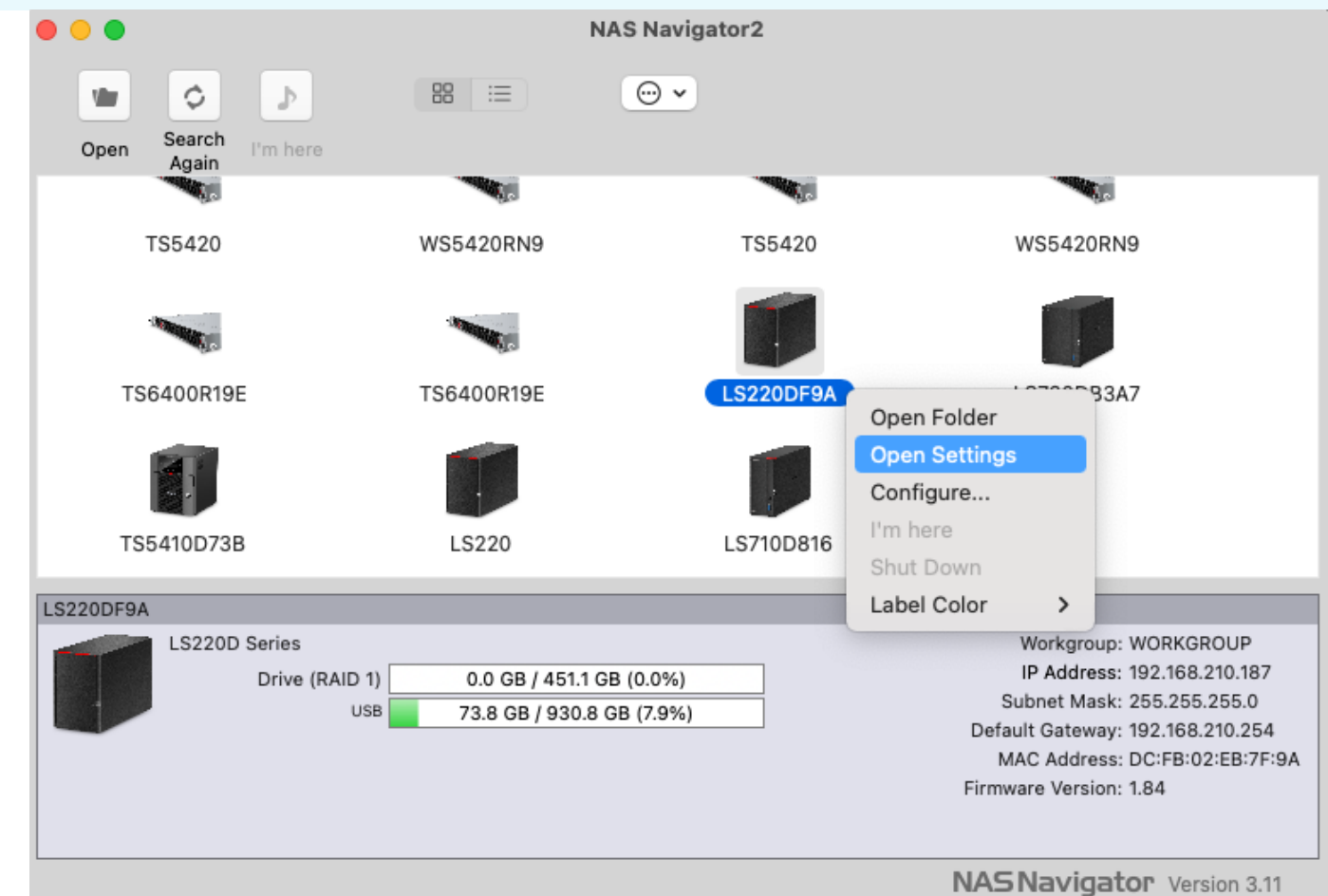
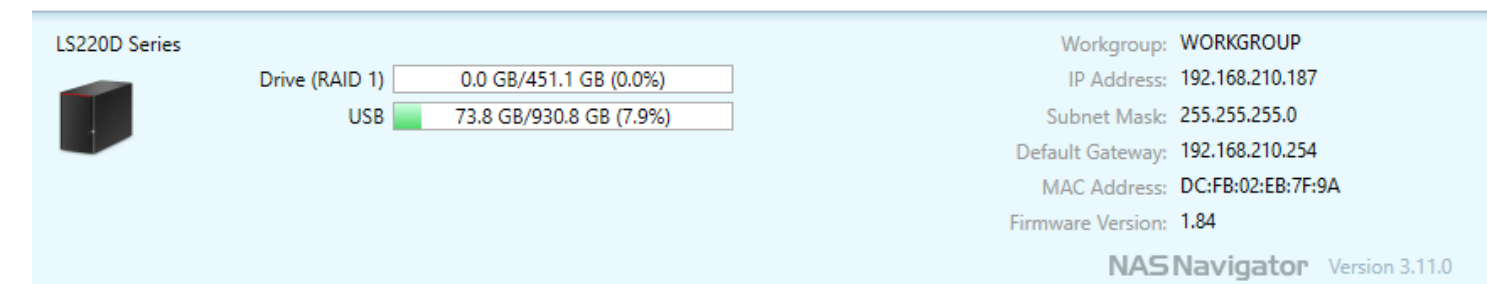
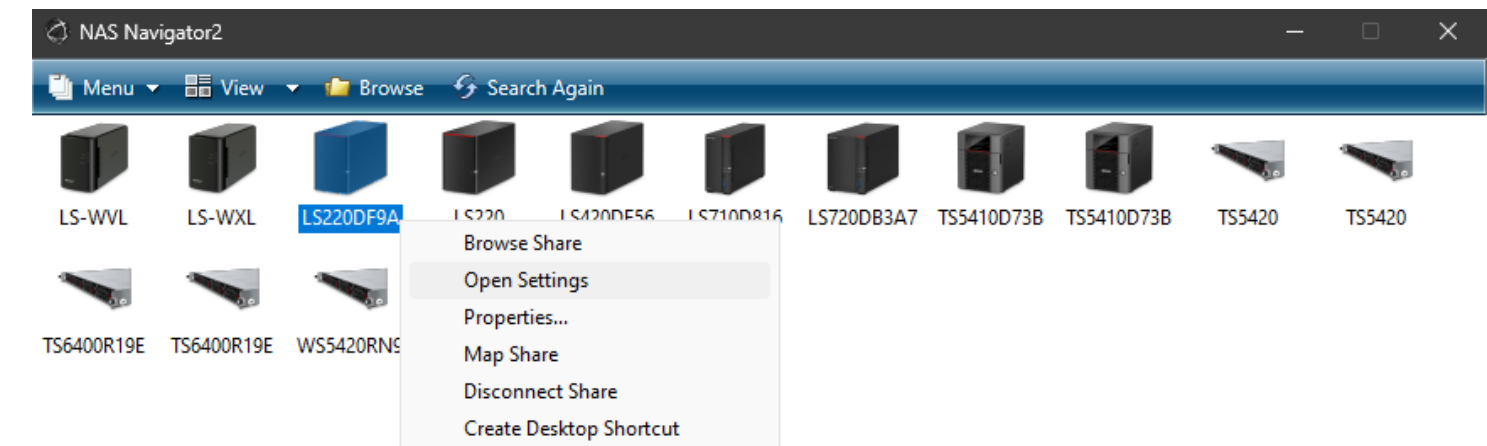
The Client Utility is split into two main sections:

- The top area is interactive and will display any discovered Buffalo NAS products it can detect after searching. The label shown will be its current hostname (name). If there is an ERROR or INFO message reported, the (!) or (?) symbol will be overlaid onto the icon.
- The bottom area is static and will only update when you select, change, or reselect a NAS from the top area. Information such as model series, drive, or RAID more/capacity, network information, and firmware version will be displayed when possible.

## What Now?

Once your NAS appears in the top section, right-click on its icon, then click on the *Open Settings* option and proceed to the next section.

Note: The default hostname is part model number, part MAC address. As shown in the highlighted example, LS 220 D F9A = LinkStation, 220 chassis, desktop, last 3 digits of the MAC address.







# LinkStation Setup Wizard – Part 1

**BUFFALO**

A new window or tab should have opened in your default web browser of choice. For your first time setting up the unit, you will be greeted with a setup wizard to help guide you through some of the basic settings. After each step when you click *Next* or *Apply* to proceed to the next page the settings will be saved and applied before it will proceed.

The Setup Wizard will take you through options and settings that are typically considered “user choice”. However, due to security changes we will provide both recommendations and instructions for this process.

## Page 1:

Create a password following the guidelines provided. It is recommended to make it memorable and containing more than just lower-case letters.

While this default Administrator account can function for both configuration through this portal as well as file access in Windows, we do recommend creating a user account specifically for file access on the upcoming [Page 3](#). If you plan to follow this, the passwords should not be identical!

The screenshot shows the Buffalo LinkStation Setup Wizard interface. At the top, there is a navigation bar with the Buffalo logo, a home icon, a download icon, a help icon, an information icon, a power icon, and a user profile icon labeled 'admin'. Below the navigation bar, the page title is 'Getting Started > Change Administrator Password'. The main content area has a heading 'Change the administrator password.' followed by the instruction 'For security, please choose a new administrator password below.' Below this, there is a section for 'Administrator Username: admin' with a checkbox labeled 'Show entered password'. There are two password input fields, one labeled 'Password:' and one labeled 'Confirm Password:', each with a key icon to its left. Below the input fields, there is a note: 'The password may include up to 20 alphanumeric characters, hyphens (-), underscores (\_), periods (.), and symbols !, #, &, @, \$, \*, ^, %.' At the bottom right, there are two buttons: 'Back' and 'Next'. At the bottom left, there is a footer with 'LinkStation LS220D (LS220DF9A) Version 1.84-0.01'. At the bottom right, there is a footer with 'Copyright © 2014 Buffalo Inc.'





## Page 2:

A pre-configured top-level shared folder called 'share' has been created prior to the product being shipped. Creating folders is optional, it can also be done afterwards in the Advanced Settings area.

### Required Step:

Folders listed here must be set to the “Set as private folder” option, followed by permissions configuration on the next page. You will be returned to this page after each folder is configured before you can finish setup.

**BUFFALO**

admin Language English

Getting Started > Create Shared Folder

Enter folder name.

Folder Name: \* This field is required.

MyDesiredFolderNameHere

The shared folder name may contain up to 27 alphanumeric characters, hyphens (-), and underscores (\_). Two-byte characters count as two characters each. Do not use a hyphen or underscore as the first character.

Description:

The shared folder description may contain up to 75 alphanumeric characters, hyphens (-), underscores (\_), and spaces. Two-byte characters count as two characters each. Do not use a space as the first character.

Cancel Create

LinkStation LS220D (LS220DF9A) Version 1.84-0.01 Copyright © 2014 Buffalo Inc.

**BUFFALO**

admin Language English

Getting Started > Shared Folder Setup

Shared Folder List

Name	Volume	Description
→ share	Array1	

Select a sharing level for your folder: share

☐ Set as public folder  
Anyone can access this folder. Recommended for sharing photos and videos with your family and friends.

☒ Set as private folder  
Only registered users can access this folder. Recommended for storing business documents and private files.

Create Shared Folder Back Next

LinkStation LS220D (LS220DF9A) Version 1.84-0.01 Copyright © 2014 Buffalo Inc.

Optional





## Page 3:

When setting up the folder to require credentials for access, should you decide not to create a user specifically for file access, you need only to adjust the permissions as listed on this page.

### Required Step:

You must set the guest account to no access, and any users, including the admin user or others created, must be set appropriately.

Optional

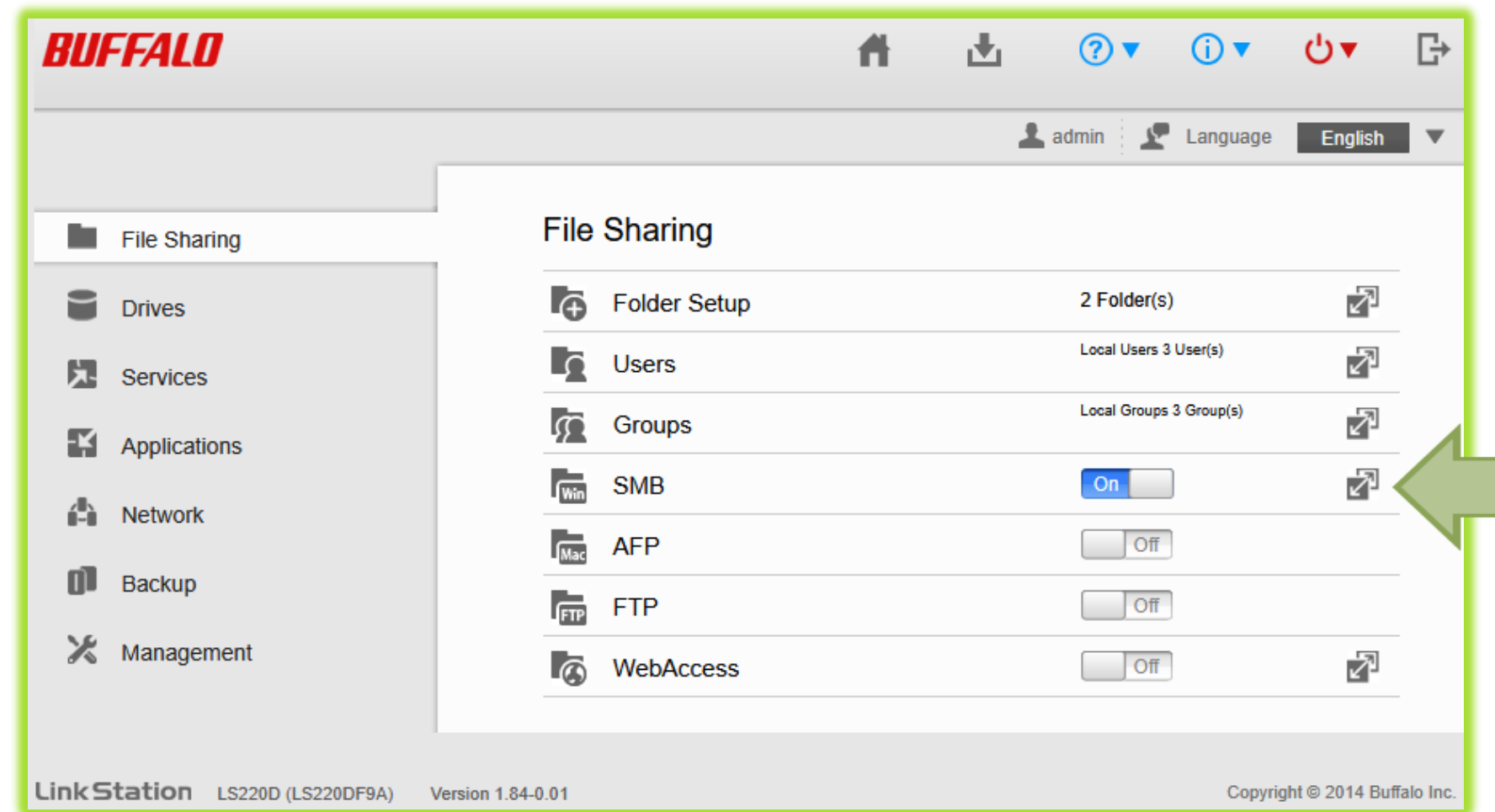
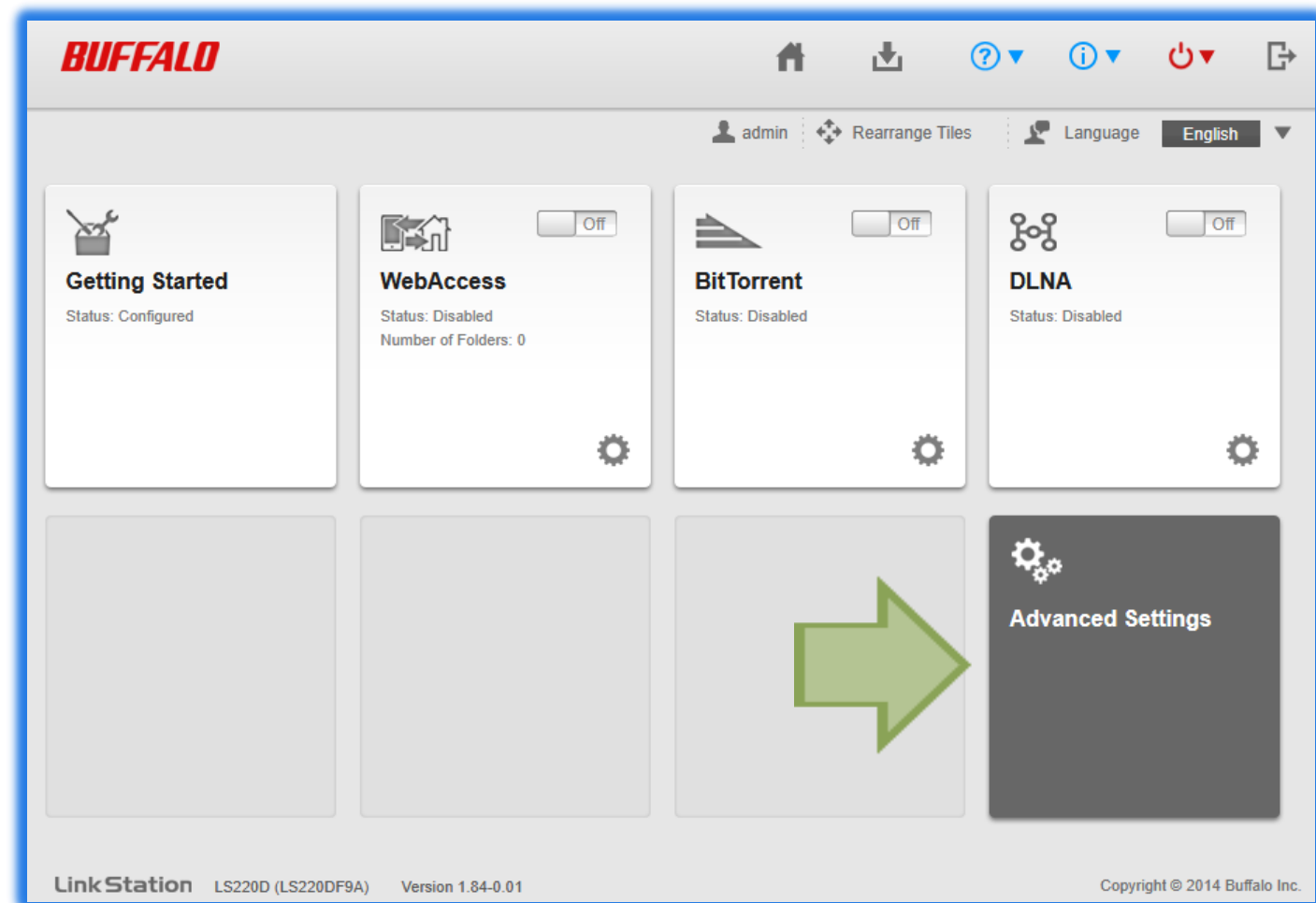




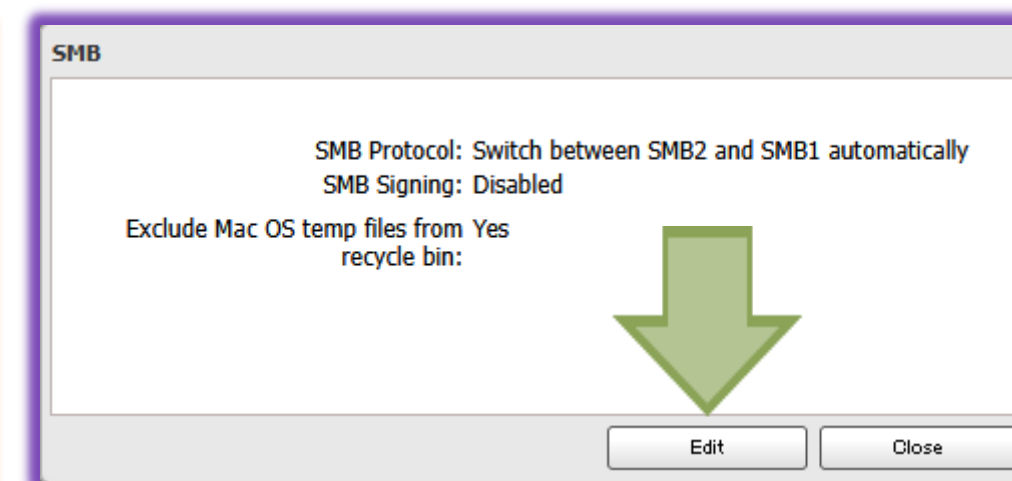
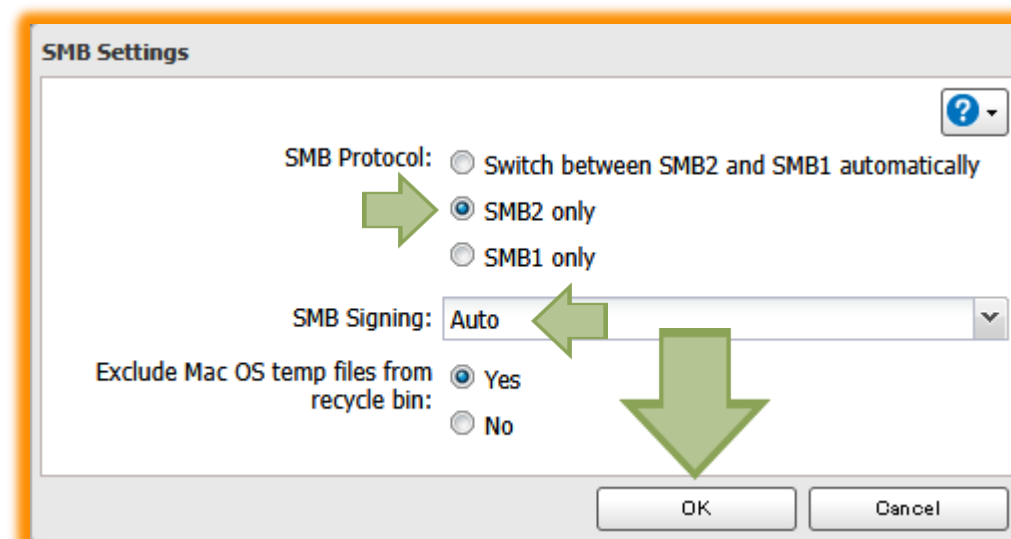
# LinkStation Setup Wizard – Part 4

**BUFFALO**

After clicking *OK* at the end of the Setup Wizard you will be redirected to this Easy Admin page. One final setting is required.



1. Click on the **Advanced Settings** tile.
2. Click on the **Configure icon** to the right of 'SMB'.
3. Click **Edit** on the SMB popup.
4. Edit the displayed options:
  1. **SMB Protocol: SMB2 only**
  2. **SMG Signing: Auto**
5. Click **OK** and close the page when complete.







# Windows Drive Mapping – Part 1

**BUFFALO**

With the LinkStation now securely configured, we can proceed to confirm basic access and map your shared folder to a drive letter for easy access.

## Important:

Many Windows settings that, if changed, will alter your experience with these directions, see [Part 3 \(Supplemental\)](#) if you encounter a different outcome.

## Step 1:

Reopen or select the Buffalo NAS Navigator2 window.

## Step 2:

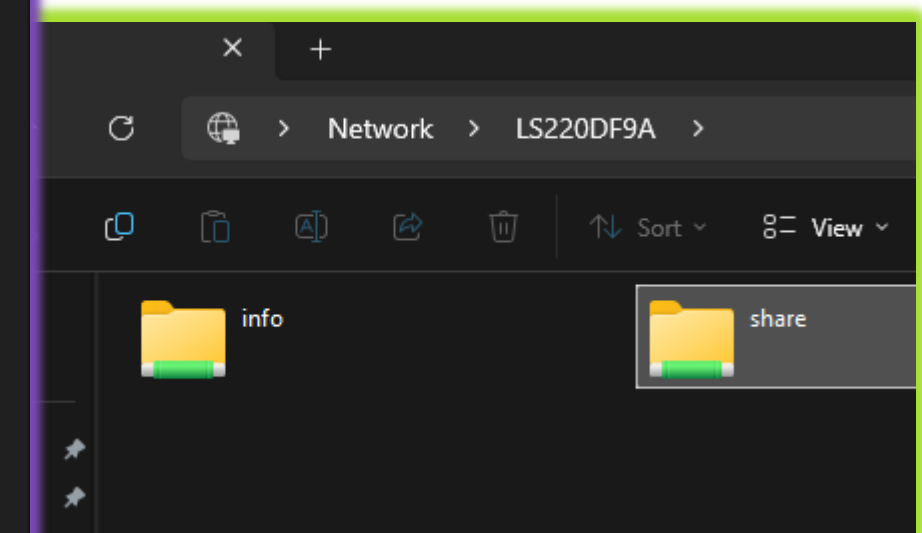
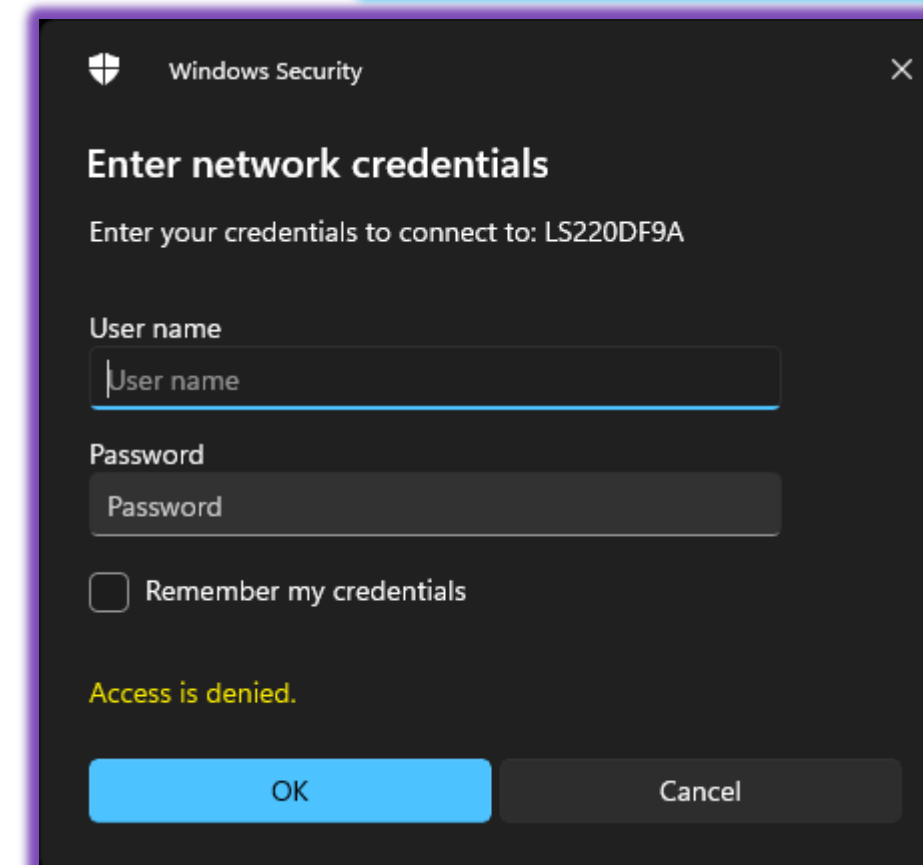
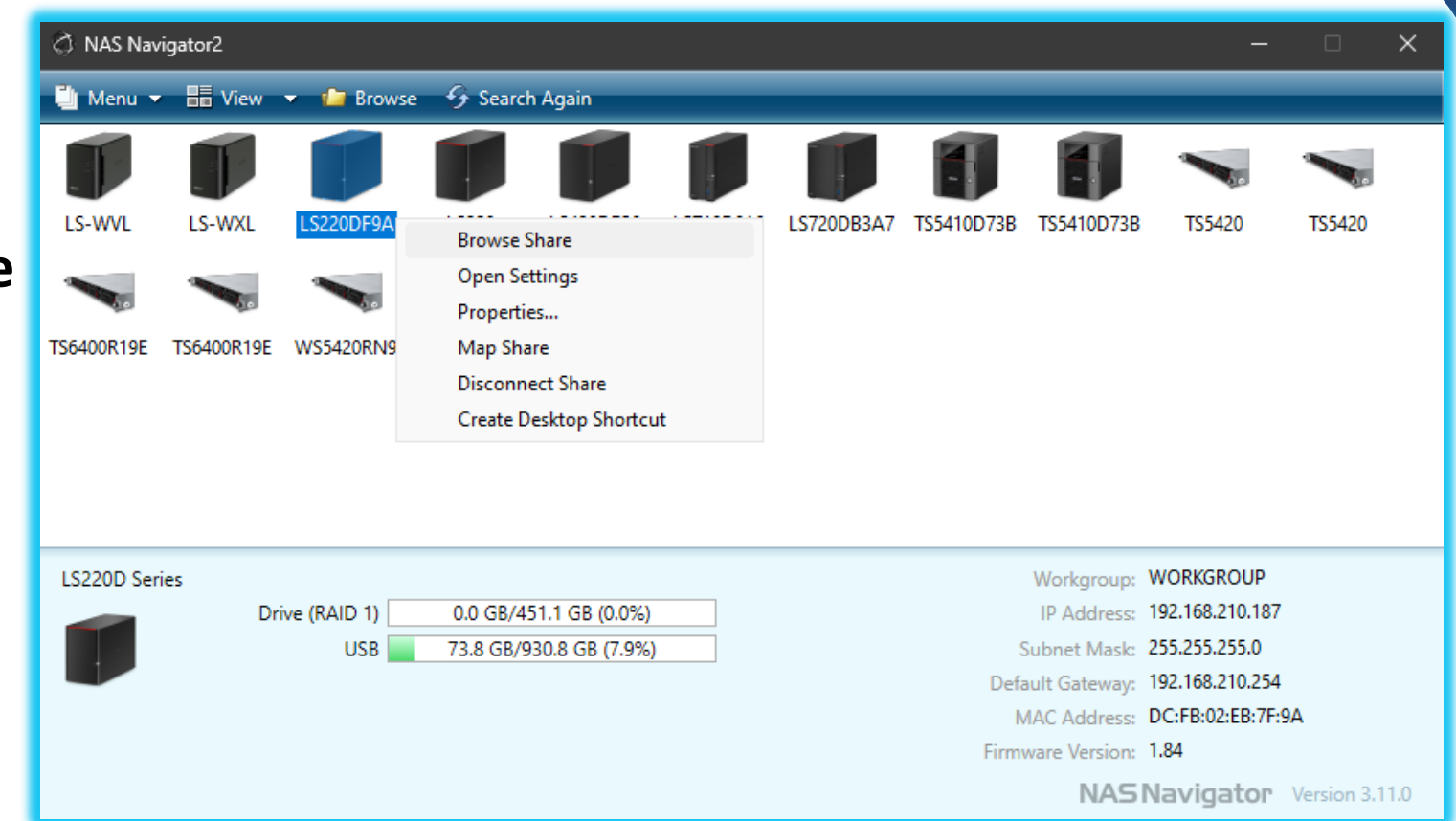
Right-click on your NAS displayed in the top section and chose *Browse Share* or double-click on the icon.

## Step 3:

File Explorer should open and list 2 or more folders, 'info' and the default 'share'. Double-click on 'share' or the folder you may have created.

## Step 4:

Windows should now prompt you for the username and password used in LinkStation Setup Wizard - Part 3. Enter them, then select the "Remember my credentials" option and click *OK*.







# Windows Drive Mapping – Part 2

**BUFFALO**

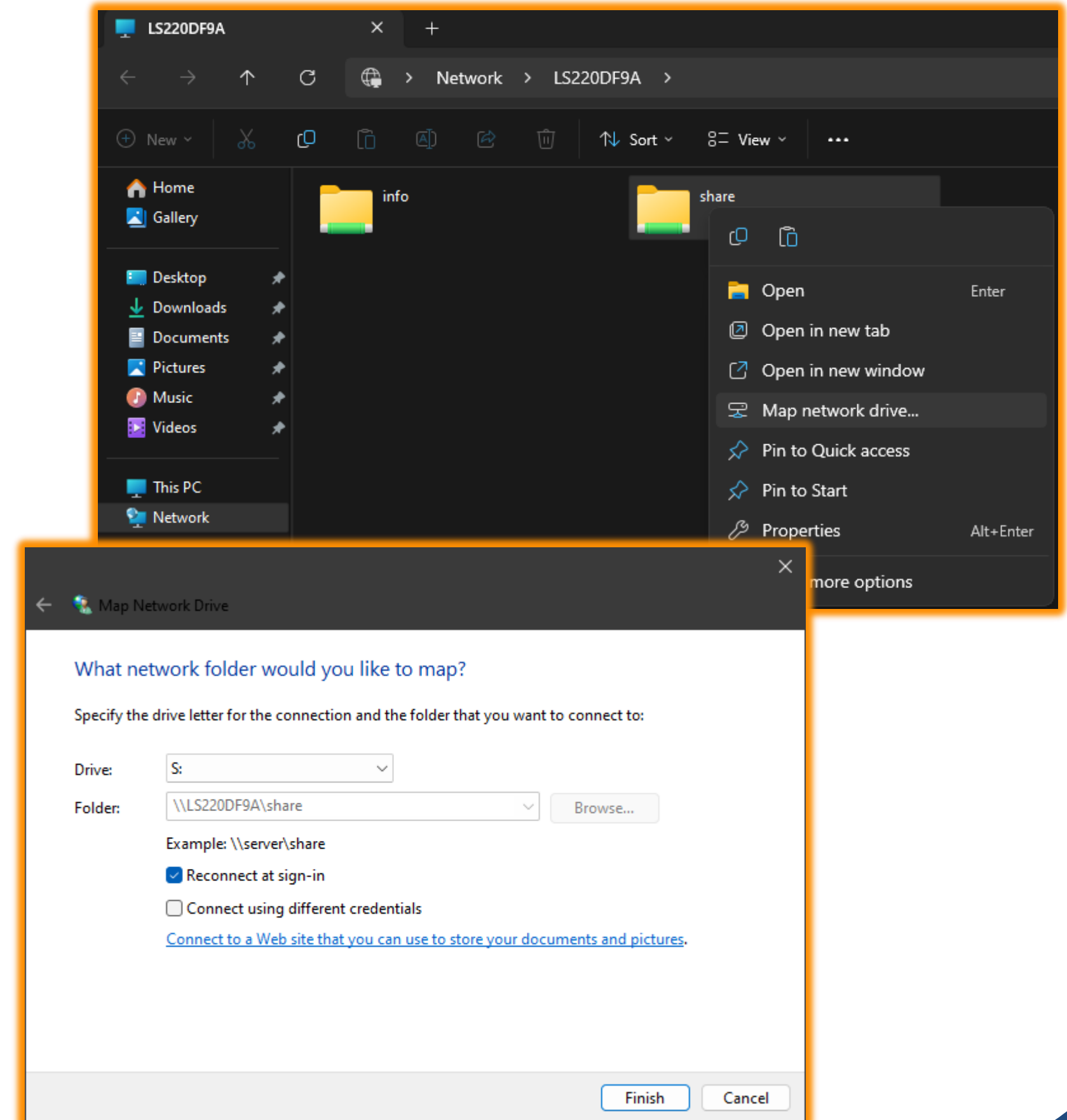
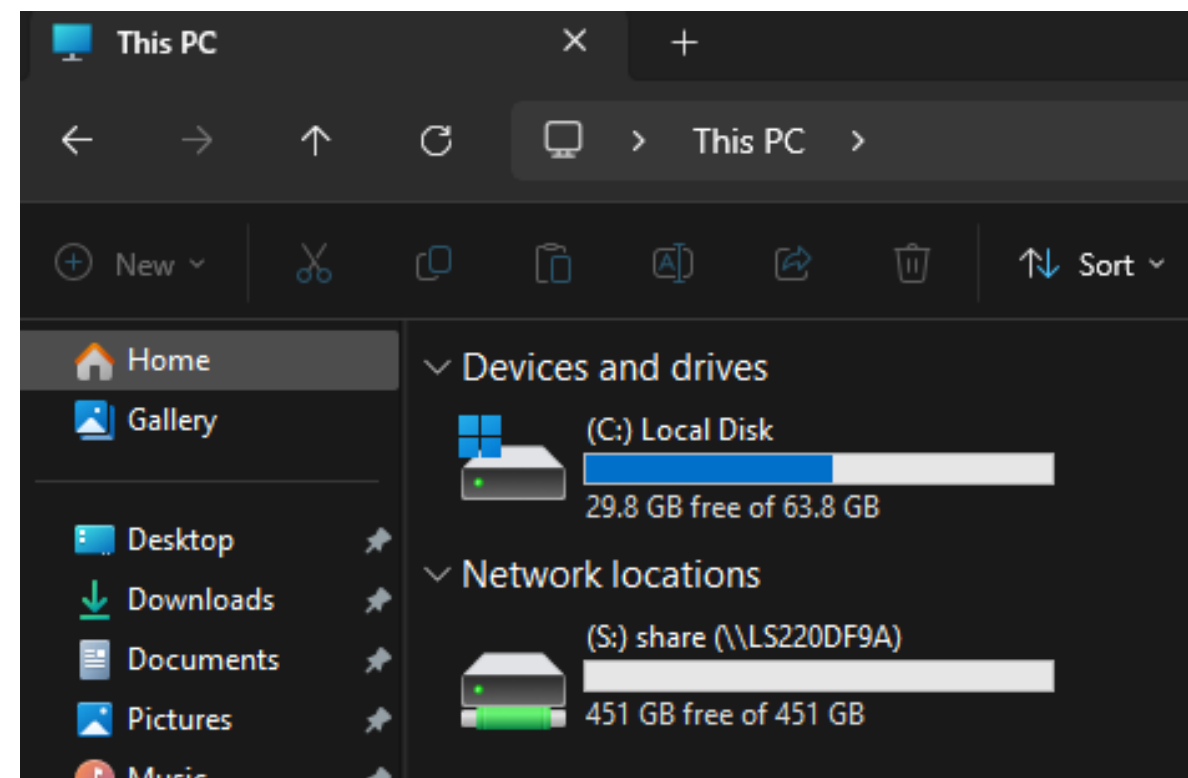
## Step 5:

You should now be presented with an empty folder. Click on the back option in File Explorer to return to the shared folder list.

## Step 6:

From the folder list, right-click on your shared folder and click *Map Network Drive*. Changing any of these settings is optional. Simply click *Finish* to continue.

The shared folder located on your Buffalo LinkStation NAS should now be listed in File Explorer as a Network Location with a drive letter for quick and easy access!







# Windows Drive Mapping – Part 3 (Supplemental)

**BUFFALO**

These steps are Supplemental and are only needed if you encounter issues with the previous directions.

## Step 1:

Take note of the device name and IP address from NAS Navigator2.

## Step 2:

Open your start menu and simply start typing 'credential manager', then click on the application that appears.

## Step 3:

1. Click the 'Windows Credential' icon.
2. Remove any prior name or IP address listings for your NAS.
3. Click *Add a Windows credential*.
4. Use your LinkStation IP address, username, and password.
5. Repeat Steps 3 & 4 but use your LinkStation name instead.

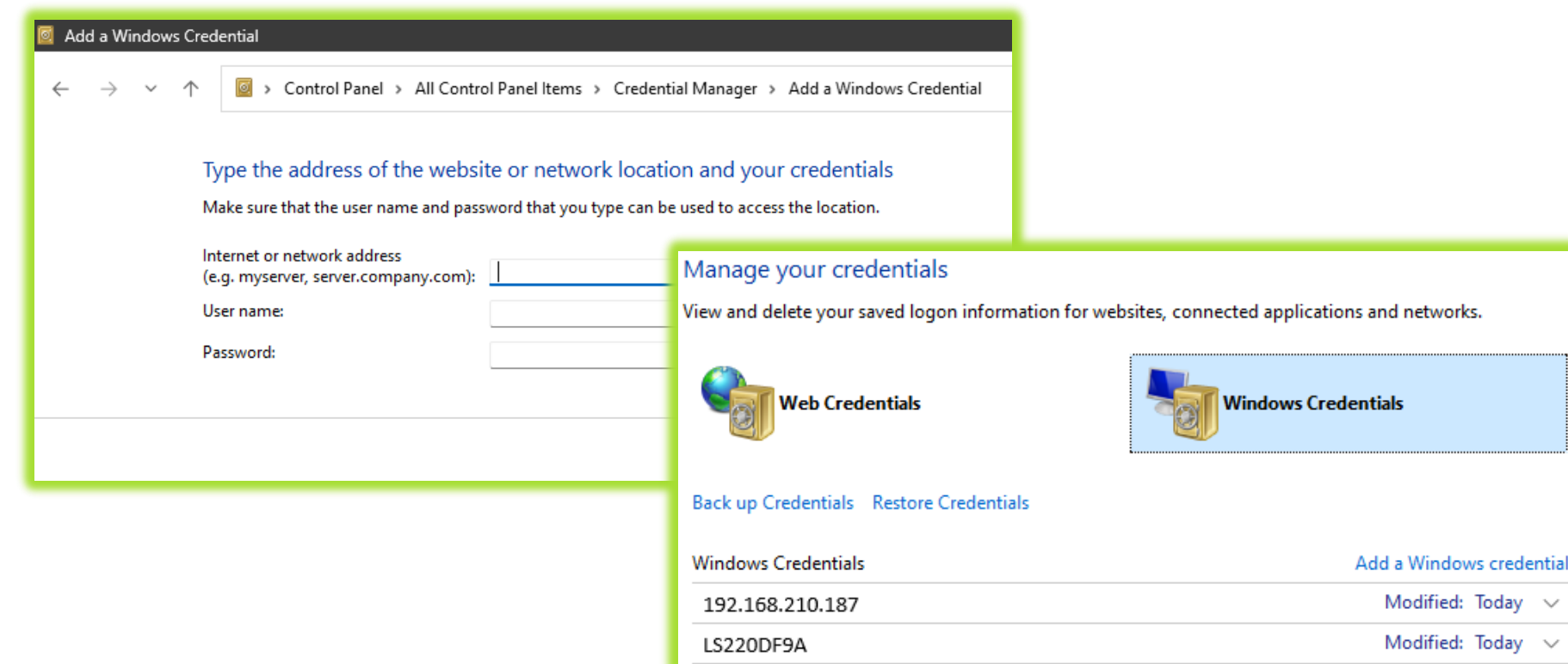
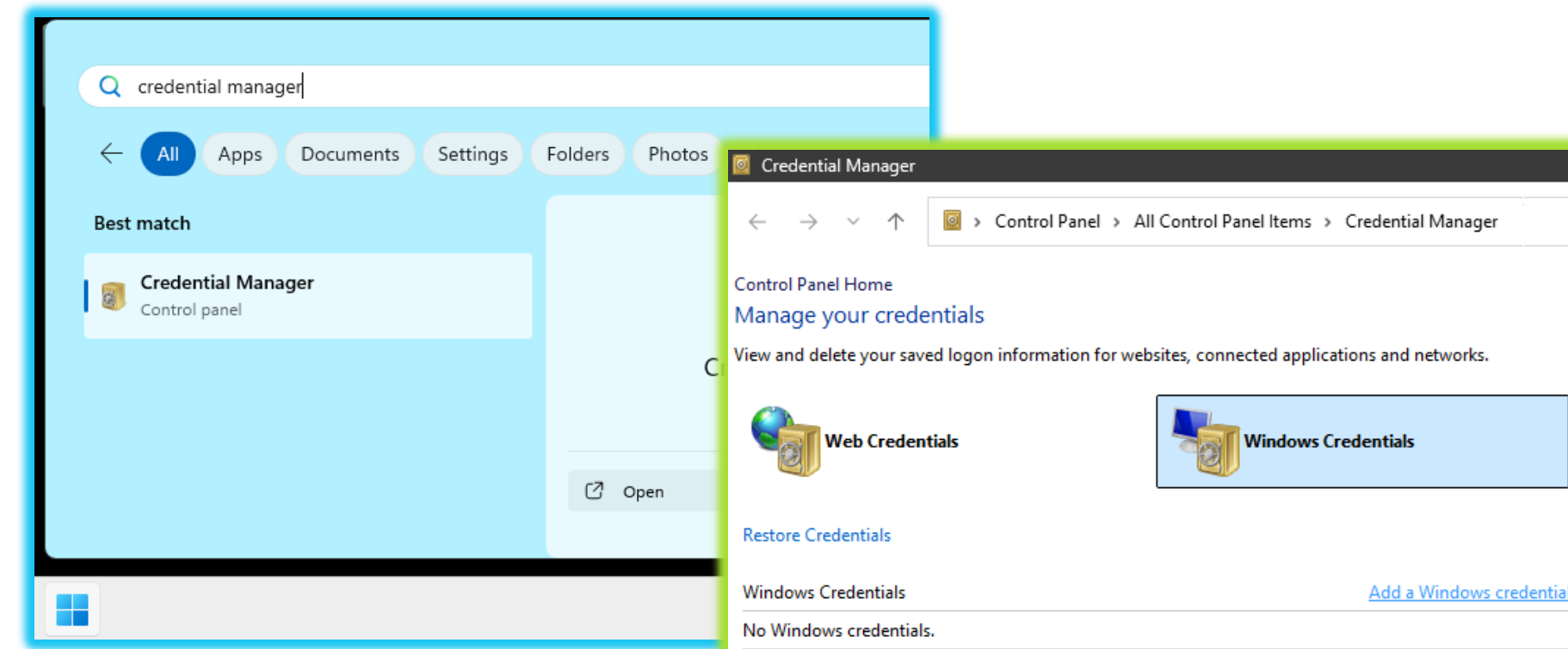
## Step 4:

The Credential Manager window will have an address bar at the top. Use this or open a new File Explorer window.

Type in this address bar:

'\\LinkStationIPAddress' or '\\LinkStationName' then hit Enter.

You should now be at Step 3 of Part 1. Proceed with Steps 5 & 6.





# macOS Folder Mounting

**BUFFALO**

With the LinkStation now securely configured, we can now proceed to mount your shared folder for easy access. Skip to the [next section](#) if your LinkStation is only going to be used as a Time Machine backup location.

## Step 1:

- Right click on your Finder icon and select *Connect to Server*.

OR

- Open Finder and use the key combination  $\text{Command} + K$ .

## Step 2:

In the presented field, type the following:

- `smb://LinkStationIPAddress/sharename`

OR

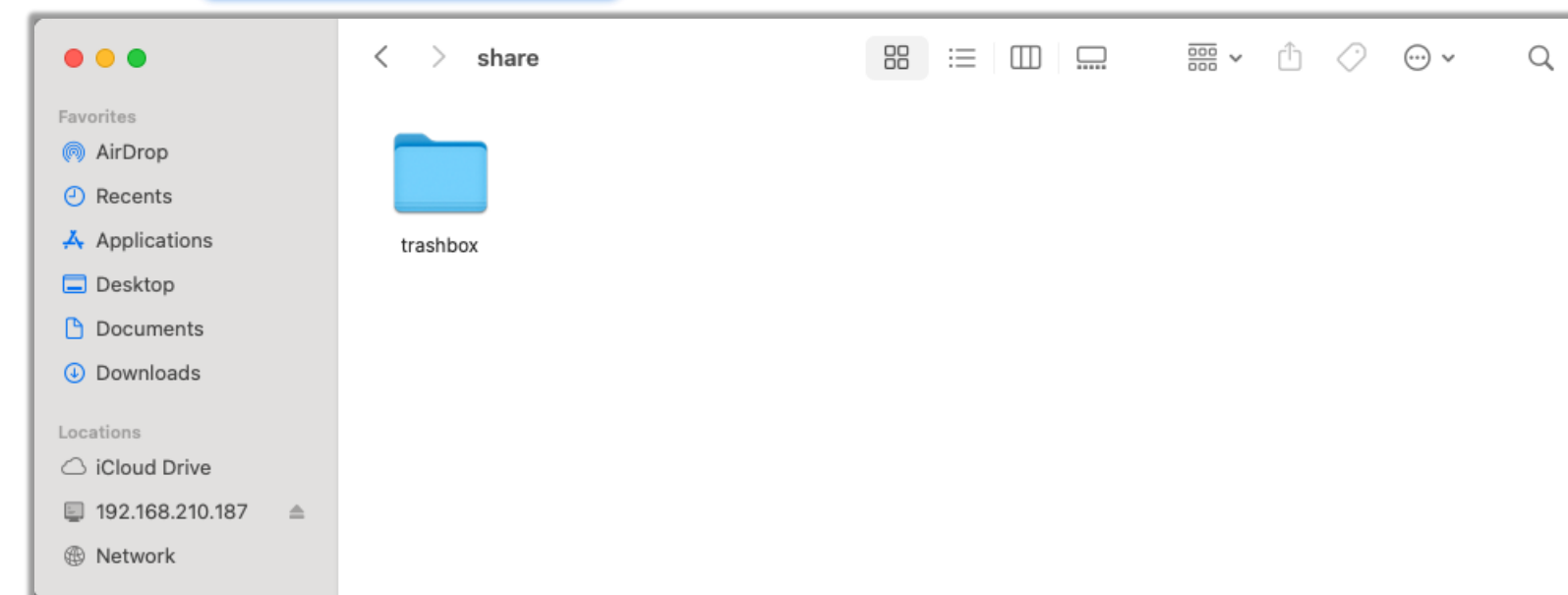
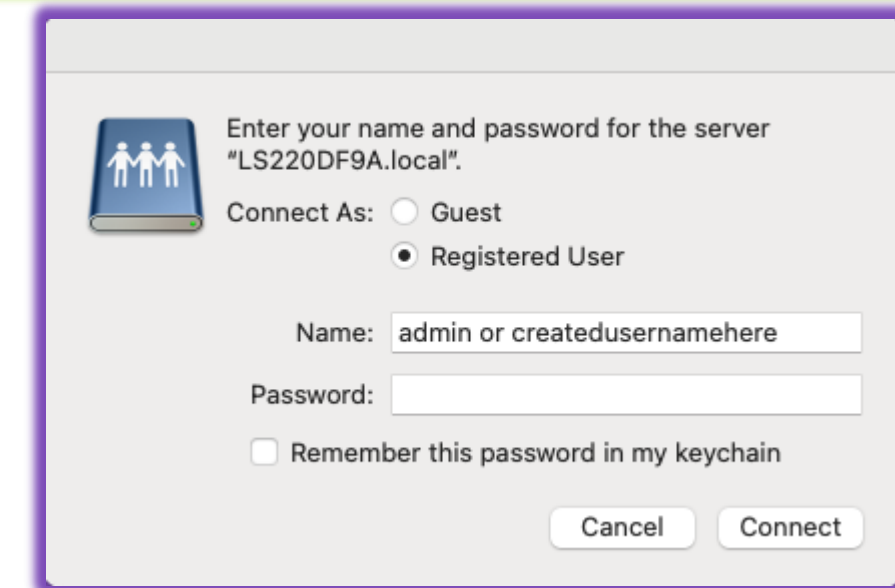
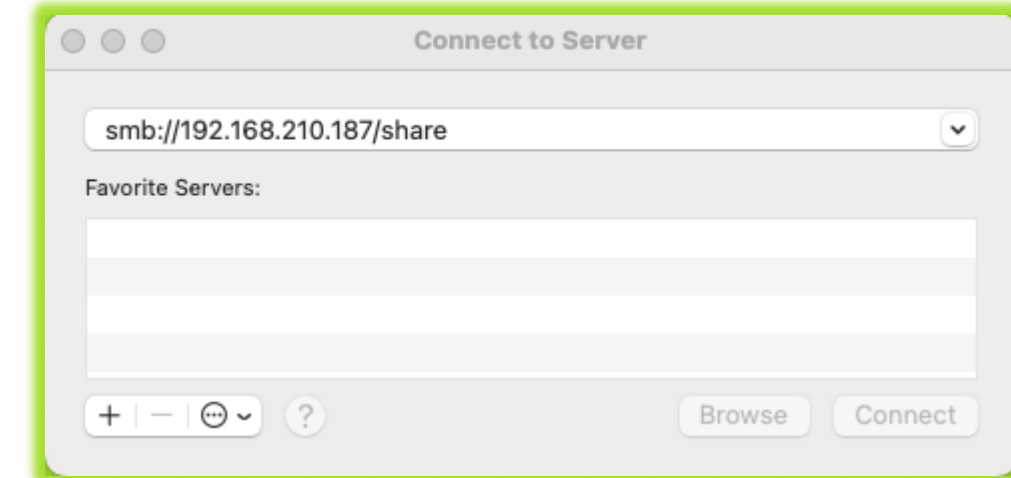
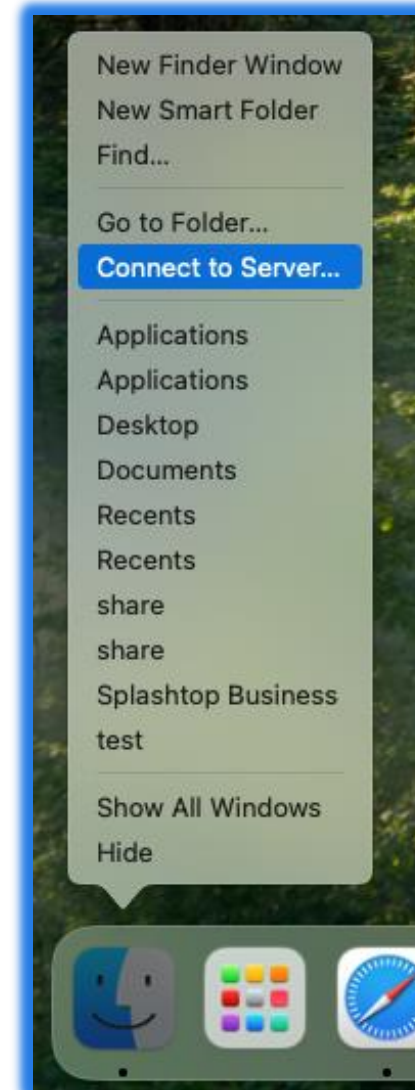
- `smb://LinkStationName/sharename`

Make sure to replace the IP address, name, and/or shared folder name with your own.

## Step 3:

You should now be prompted for the username and password you configured earlier. Enter that in and click *Connect*.

A new Finder window may open to the shared folder and be listed under Locations in Finder going forward.







# Windows Backup Featuring NovaBackup

**BUFFALO**

Buffalo Americas, Inc. has partnered with NovaStor to include a free copy of its NovaBackup software that we recommend be used for Windows Backup needs.

Windows does have a built-in 'Backup and Restore' tool. However, as a legacy feature, there are many limitations and therefore we do not recommend or support its use.

## Step 1:

- Register your LinkStation [HERE](#).
  - Choose 'General Product Registration' in the dropdown.
  - Select the 'I need my NovaBackup licenses!' option.

This process is manual. Once complete you will be sent a direct link to validate and apply for your NovaBackup License.

## Step 2:

Install NovaBackup following the directions [HERE](#).

## Step 3:

Open NovaBackup and follow the setup guide [HERE](#).

### Important:

When adding the NAS as a device, you must use the full path and not the mapped folder. This is a Windows limitation.

If you are still having issues, check [HERE](#) before contacting NovaBackup or Buffalo for assistance.



NovaBackup is capable of many types of backups. If you know what you want to backup the default backup option is best to save on storage space, you may also do a system image if unsure.

Job Name	Type	Run As	Last Run	Next Run	Current Status
Imagebased_ag-ws-jaton_disk0_monthly_full	Monthly	SV\jaton.justice		11/13/2016 3:00:00 AM	Waiting
Filebased_ag-ws-jaton_data_weekly_Full	Weekly	SV\jaton.justice		11/14/2016 1:00:00 AM	Waiting
Filebased_ag-ws-jaton_data_daily_diff	Daily	SV\jaton.justice		11/15/2016 1:00:00 AM	Waiting

**Weekly Full backup**      **Daily Differential Backup**

**Monthly Full Image Backup**



# macOS Backup Featuring Time Machine – Part 1

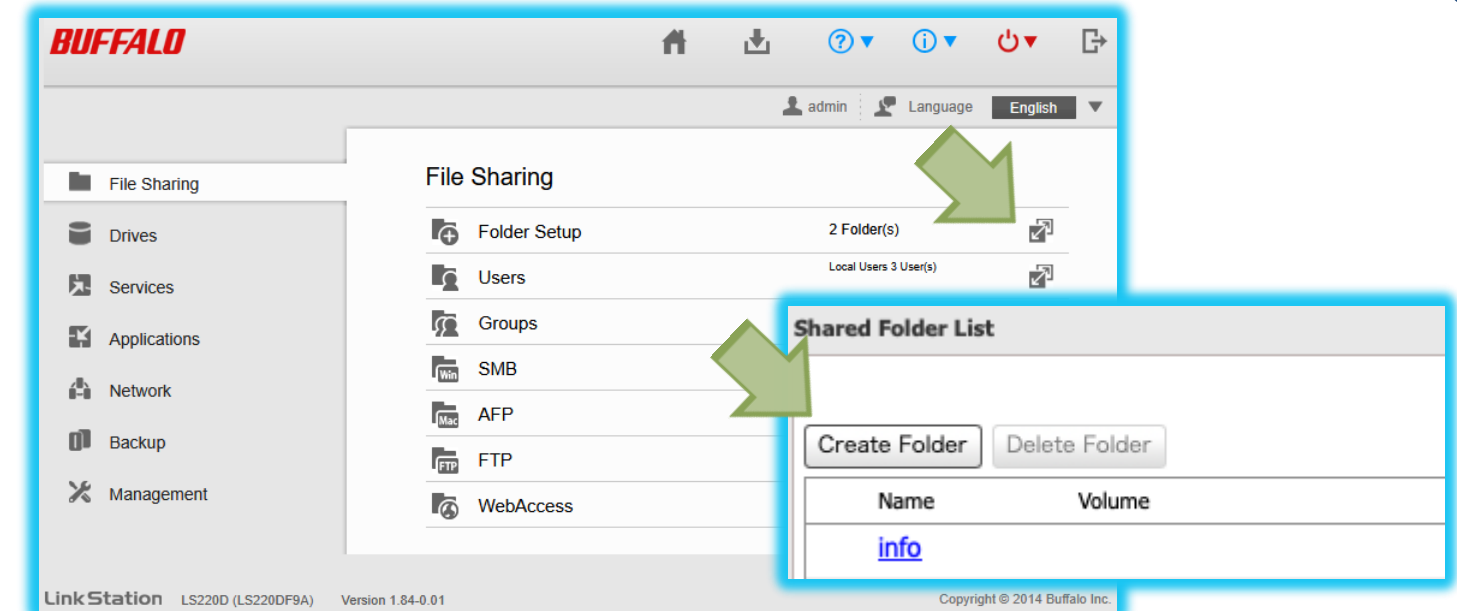
**BUFFALO**

Apple's macOS has a built-in tool called Time Machine that creates full system backups instead of file/folder backups and is used by most customers. Creating a dedicated folder and activating the feature is required for use.

## Step 1:

Create and configure a folder specifically for use by Time Machine.

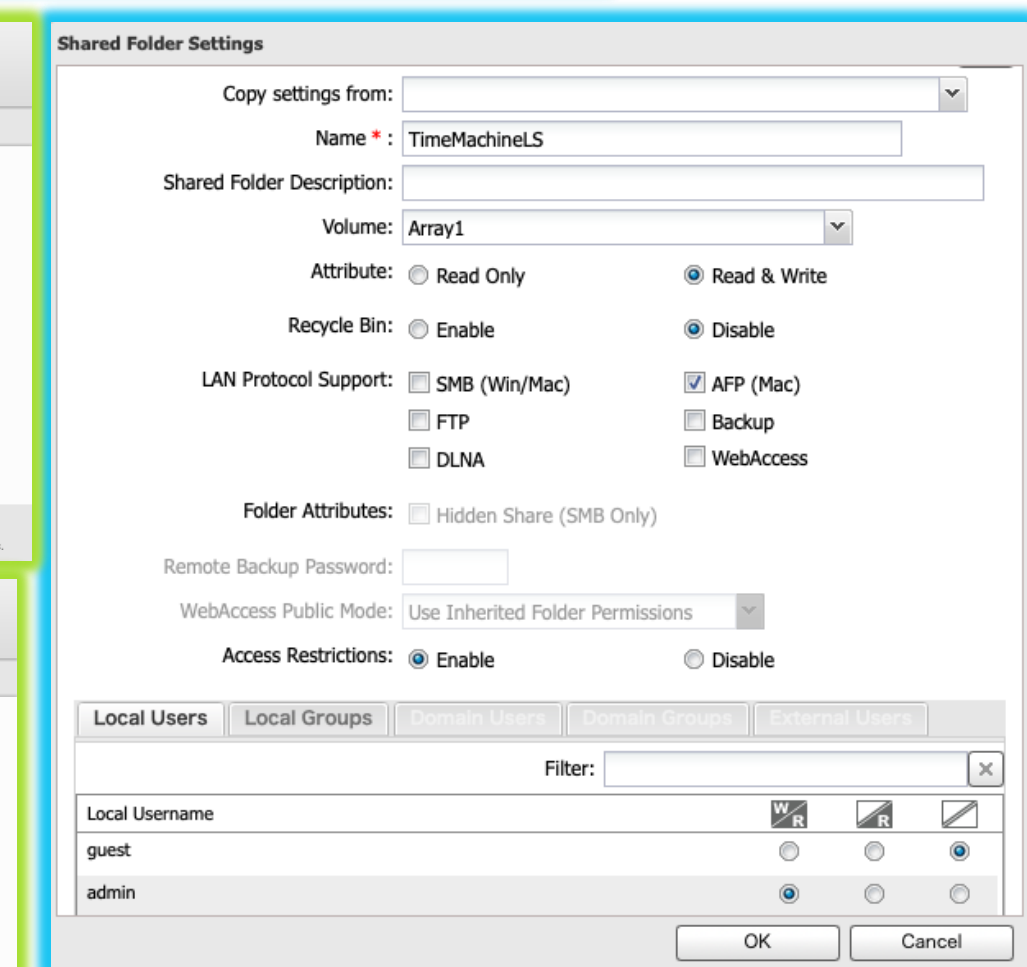
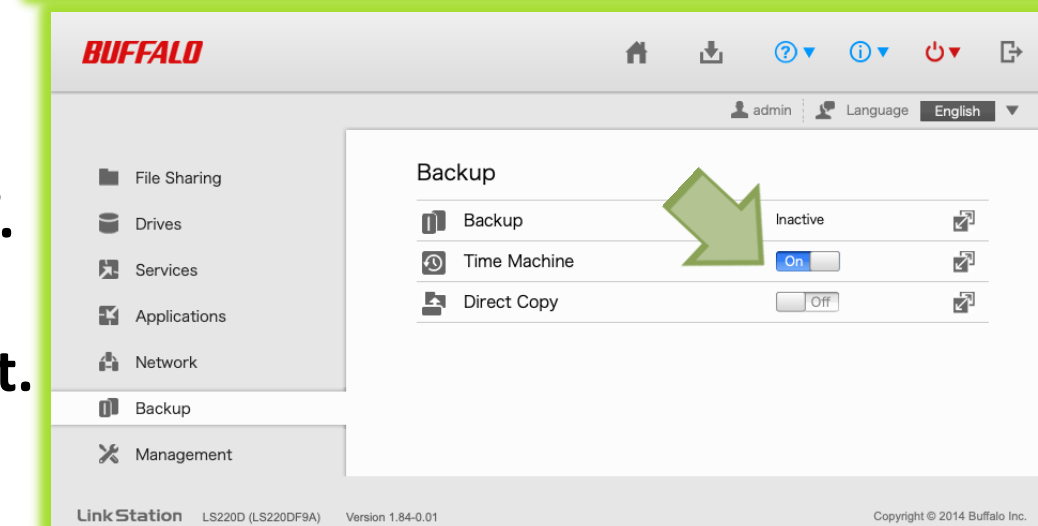
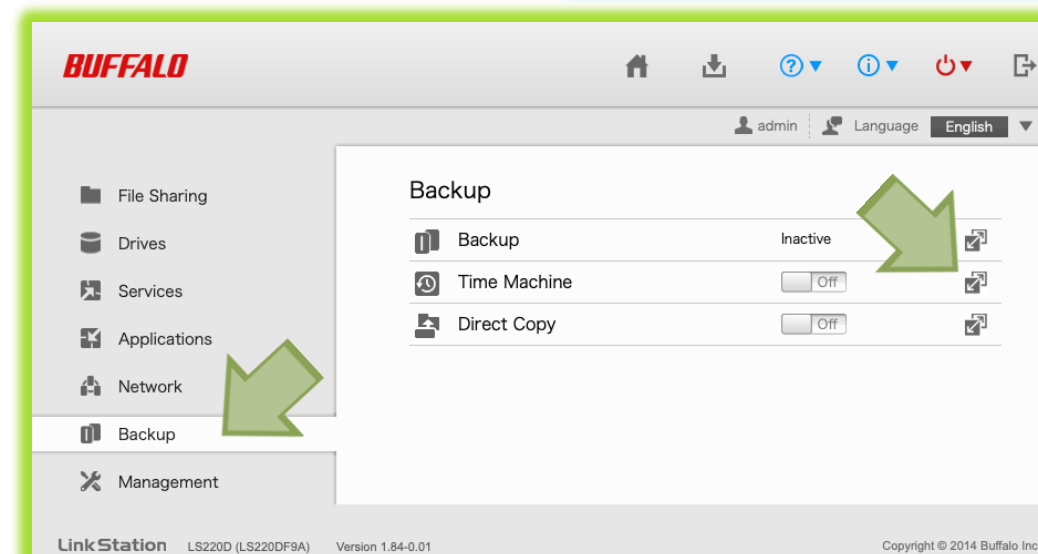
1. Open the Settings page for your LinkStation.
2. Click the 'Advanced Settings' tile.
3. Click the Configure icon to the right of 'Folder Setup'.
4. Click *Create Folder*.
5. Modify the page to match the example shown.
6. Click *OK* and close the shared folder list.



## Step 2:

Select the folder and enable the Time Machine function.

1. Click the 'Backup' menu on the left.
2. Click the Configure icon to the right of 'Time Machine'.
3. Click *Edit*, browse and select the folder, then click *OK*.
4. Click the **On/Off** toggle for 'Time Machine' to enable it.
5. Return to Finder for the next steps.







With the LinkStation now securely configured, we can now proceed to mount your shared folder for quick and easy access.

## Step 1:

- Right click on your Finder icon and select *Connect to server*.
- OR
- Open Finder and use the key combination  $\text{Command} + K$ .

## Step 2:

In the presented field, type the following:

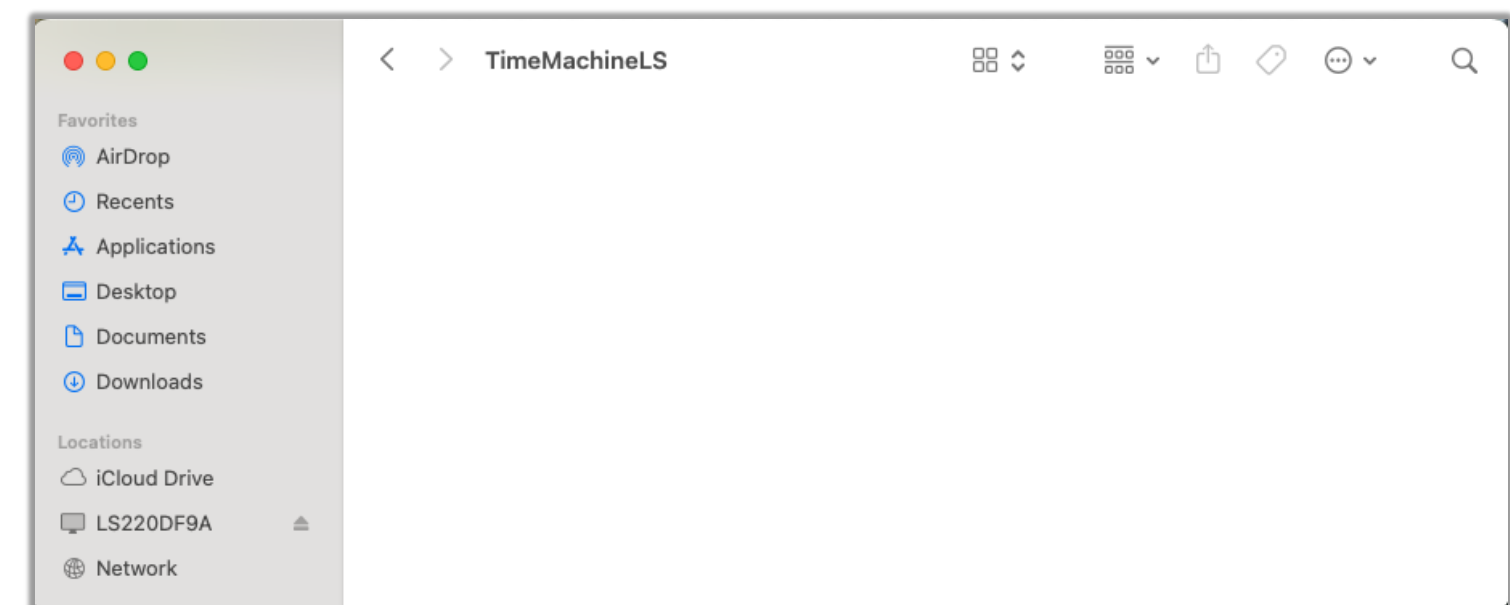
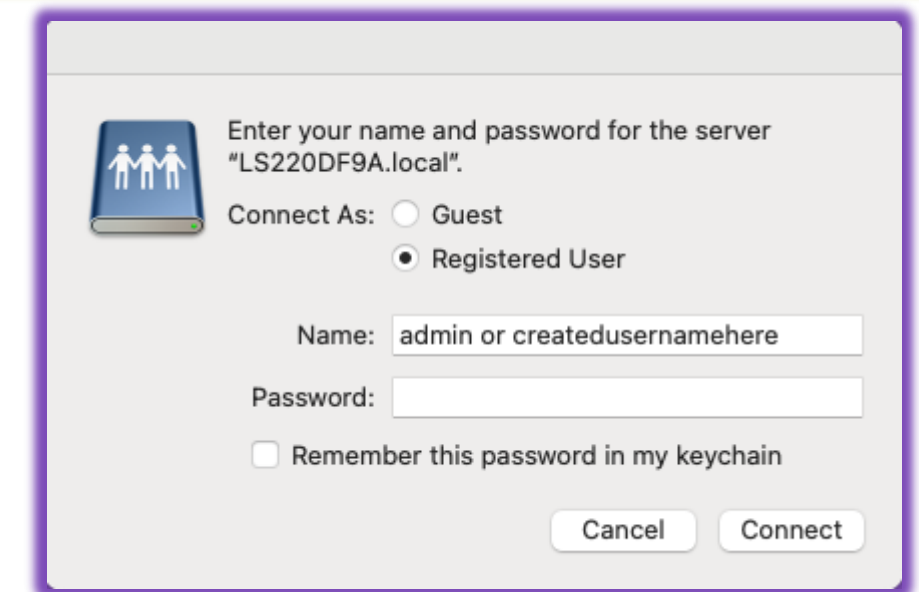
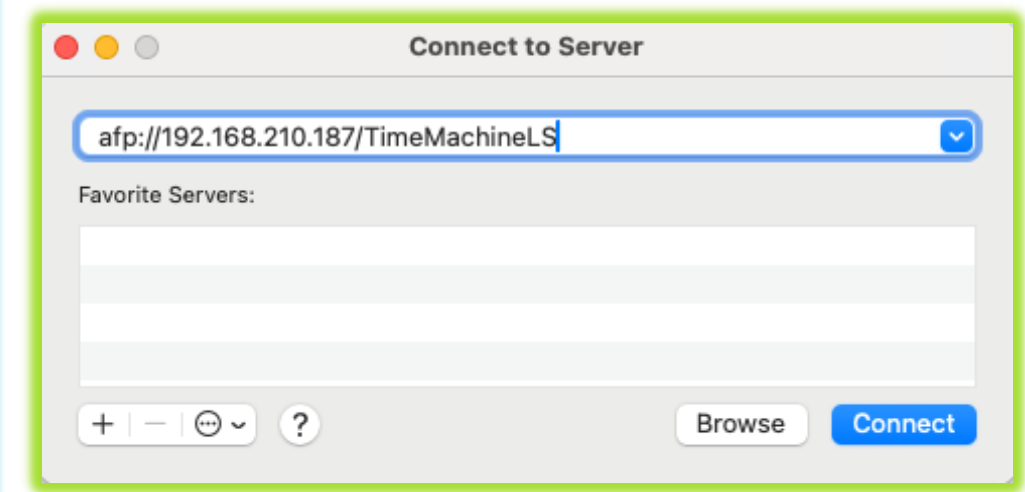
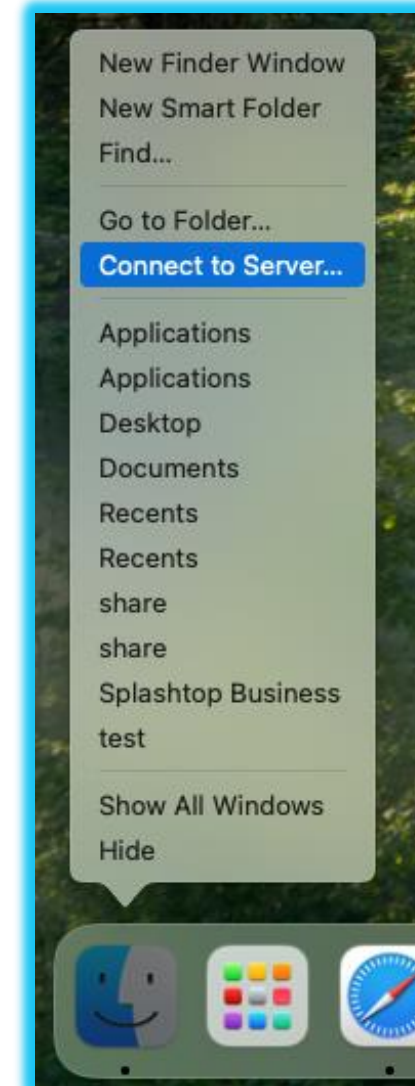
- `afp://LinkStationIPAddress/sharename`
- OR
- `afp://LinkStationName/sharename`

Make sure to replace the IP address, name, and/or shared folder name with your own.

## Step 3:

You should now be prompted for the username and password you configured earlier. Enter that in and click *Connect*.

A new finder window may open to the shared folder and be listed under Locations in Finder going forward.





# macOS Backup Featuring Time Machine – Part 3

**BUFFALO**

## Step 4:

Open the Time Machine settings in macOS to proceed.

You can do this by finding it in the System Settings or searching.

1. Click on the Apple icon in the top left corner.
2. Click *System Settings*.
3. Make sure 'General' is selected on the left, then scroll down on the right and click *Time Machine*.

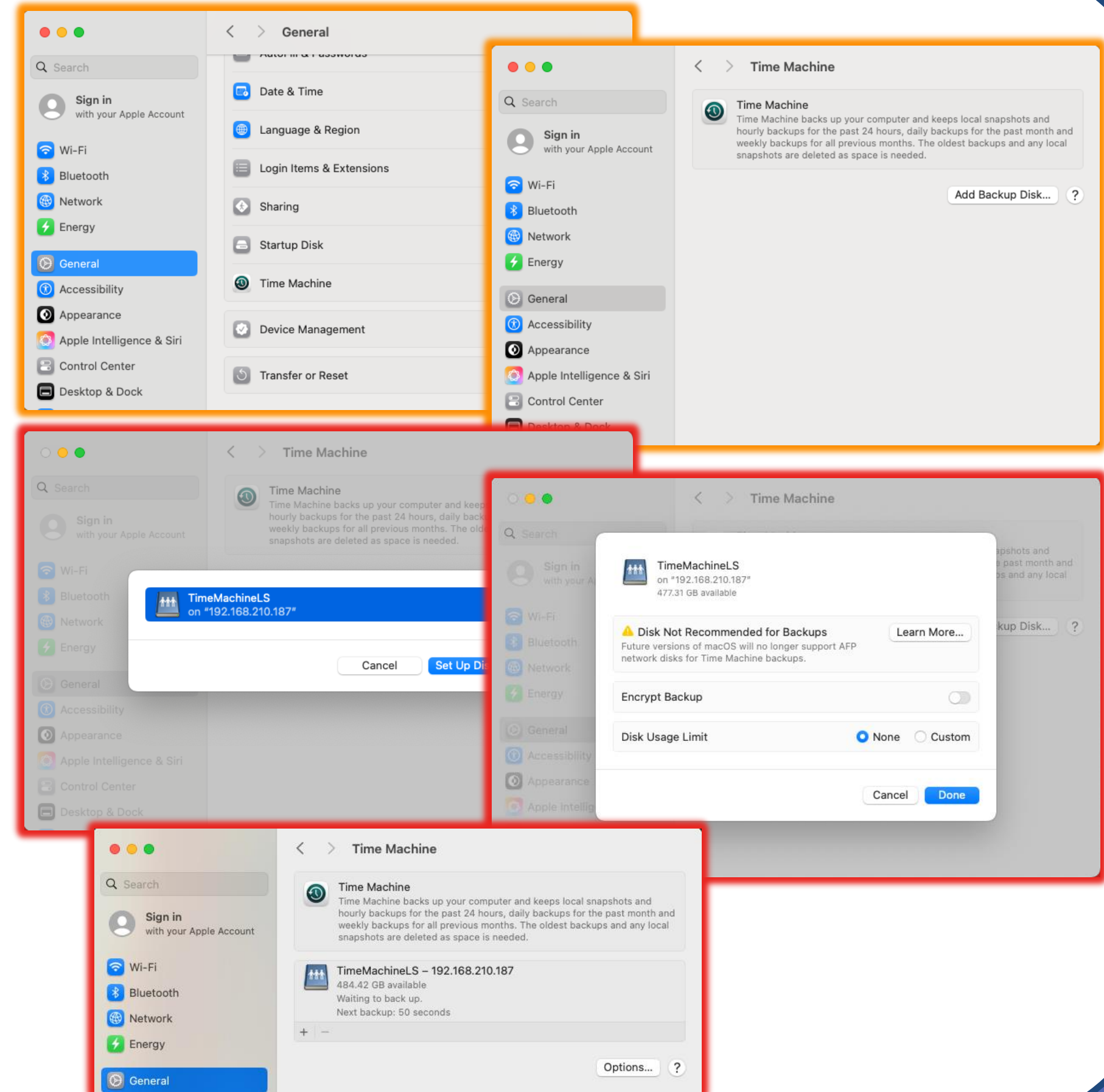
## Step 5:

Adding a backup location will require a few steps.

1. Click *Add backup disk...*
  2. Your shared folder should be listed. Click *Set Up Disk...*
  3. Enter your LinkStation credentials if prompted.
  4. User choice options will be displayed; you may choose to turn off Backup encryption should you desire and set a disk usage limit if you want to use the LinkStation for more.
- Once you click *Done*, your first backup should start shortly.

## Important:

As of macOS Sequoia 15.6, a warning regarding the use of AFP for Time Machine will be displayed. This setup guide will be updated in the future to accommodate this as required.





**Thank You for Using Our Setup Guide!**

***BUFFALO***

**We are always looking for ways to improve this  
guide to address the most common issues!**

**Please send any feedback you may have to:  
[LS200SGFeedback@BuffaloAmericas.com](mailto:LS200SGFeedback@BuffaloAmericas.com)**